

The Virginia Commonwealth
University
Life Sciences Building

Lindsay Rekuc

Building Overview

- Location: Richmond, VA
- Size: 132,500 s.f.
- Cost: \$22 million
- Completed: 2001
- Architect: Ayers Saint Gross

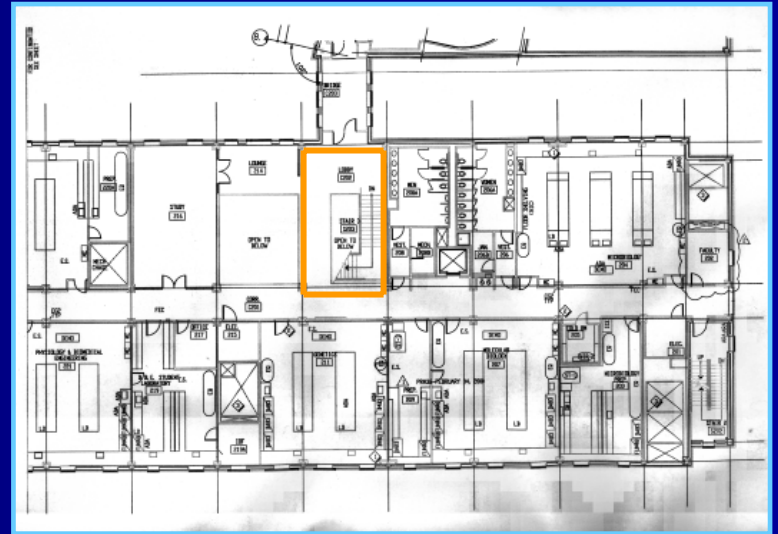
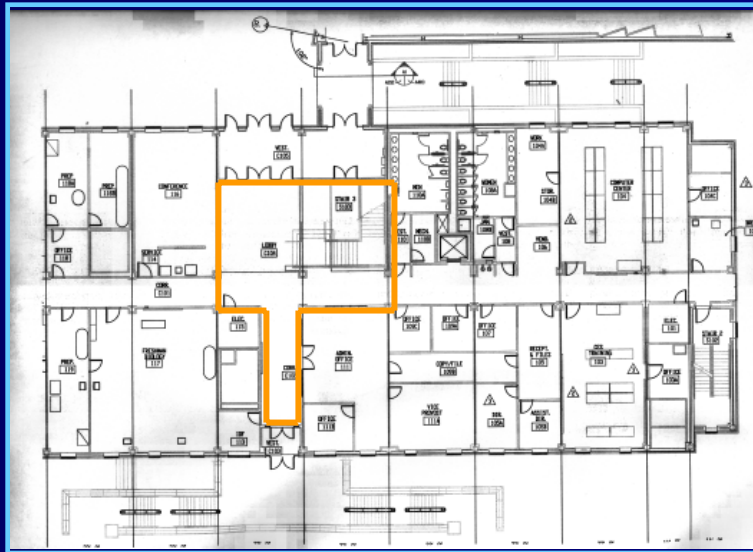


Building Uses

- Classrooms
- Laboratories
- Auditoriums
- Greenhouse
- Aquatics Facility



Lobby



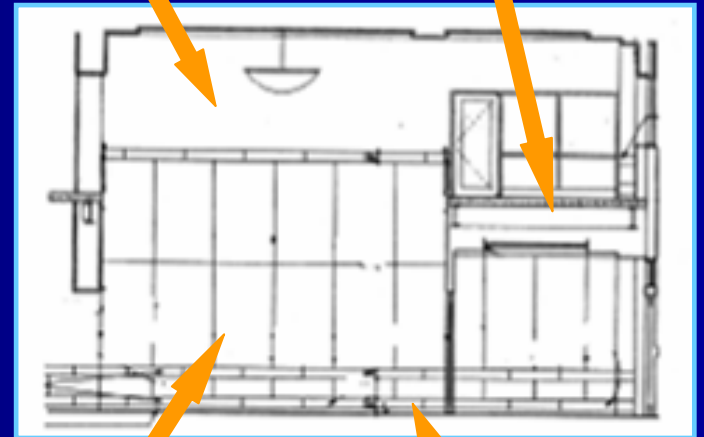
Lobby- Elevations

Vinyl Composition
Tile

Gypsum Wall
Board



Vinyl Composition
Tile



Slate

Wood Paneling

Slate

Lobby- Elevations

Vinyl Composition
Tile

Gypsum Wall
Board



Wood Paneling

Slate

Gypsum Wall
Board

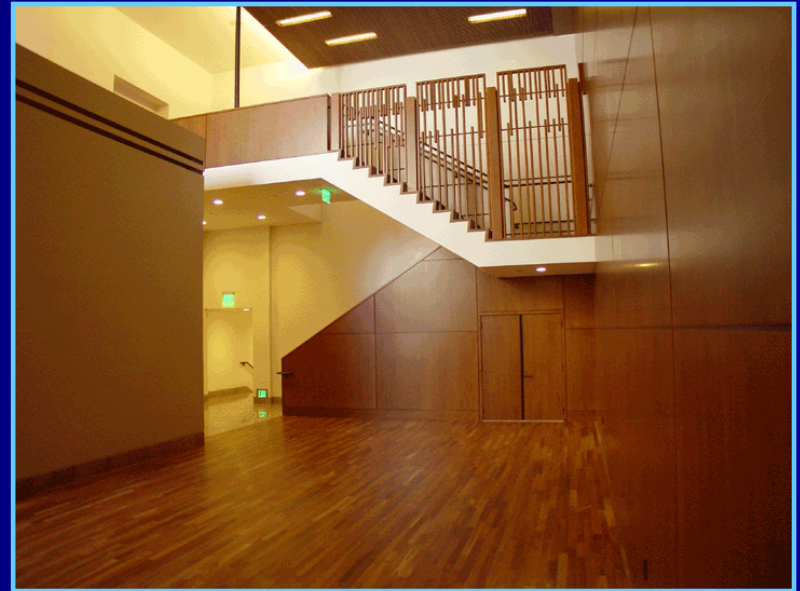
Lobby- Design Considerations

- Focal Points:
 - Building Exits
 - Stairway
 - Corridors
- Adjustment between outdoors and indoors

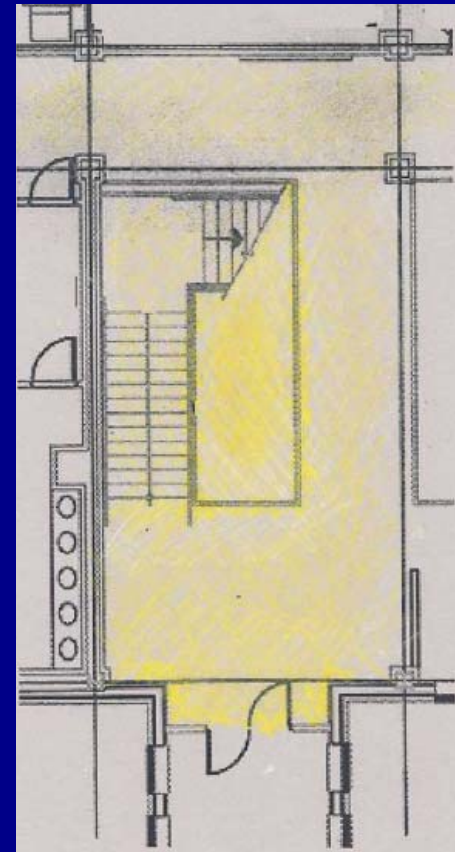
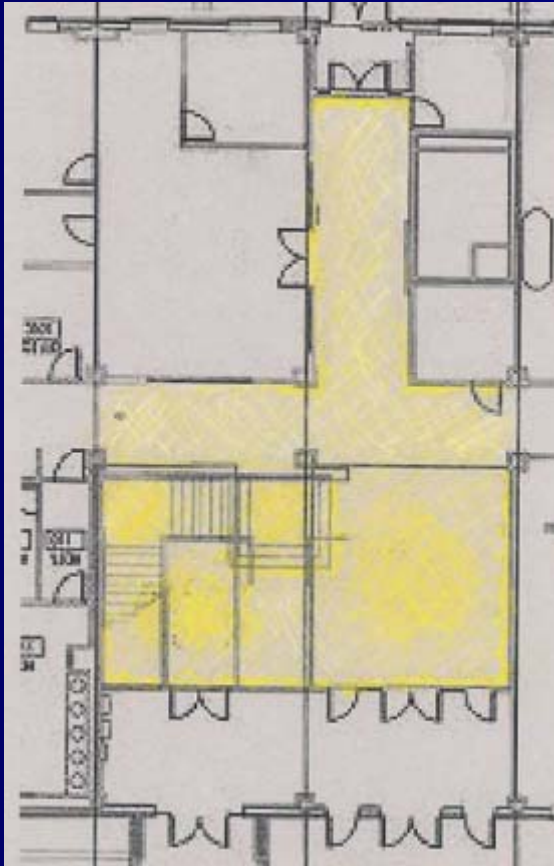
Lobby- Schematic Design Goals

- Highlight Wood Paneling
- Provide guidance in direction
- Inviting atmosphere

Lobby- Schematic Design Examples



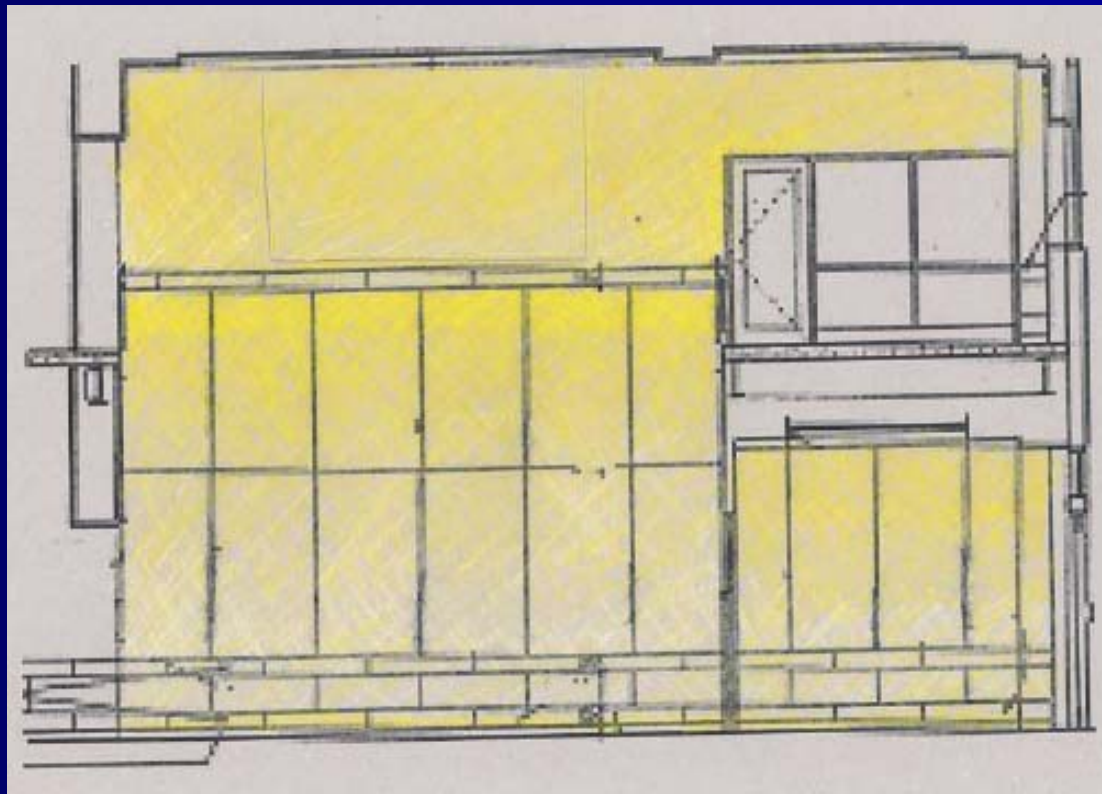
Lobby- Schematic Design Sketches



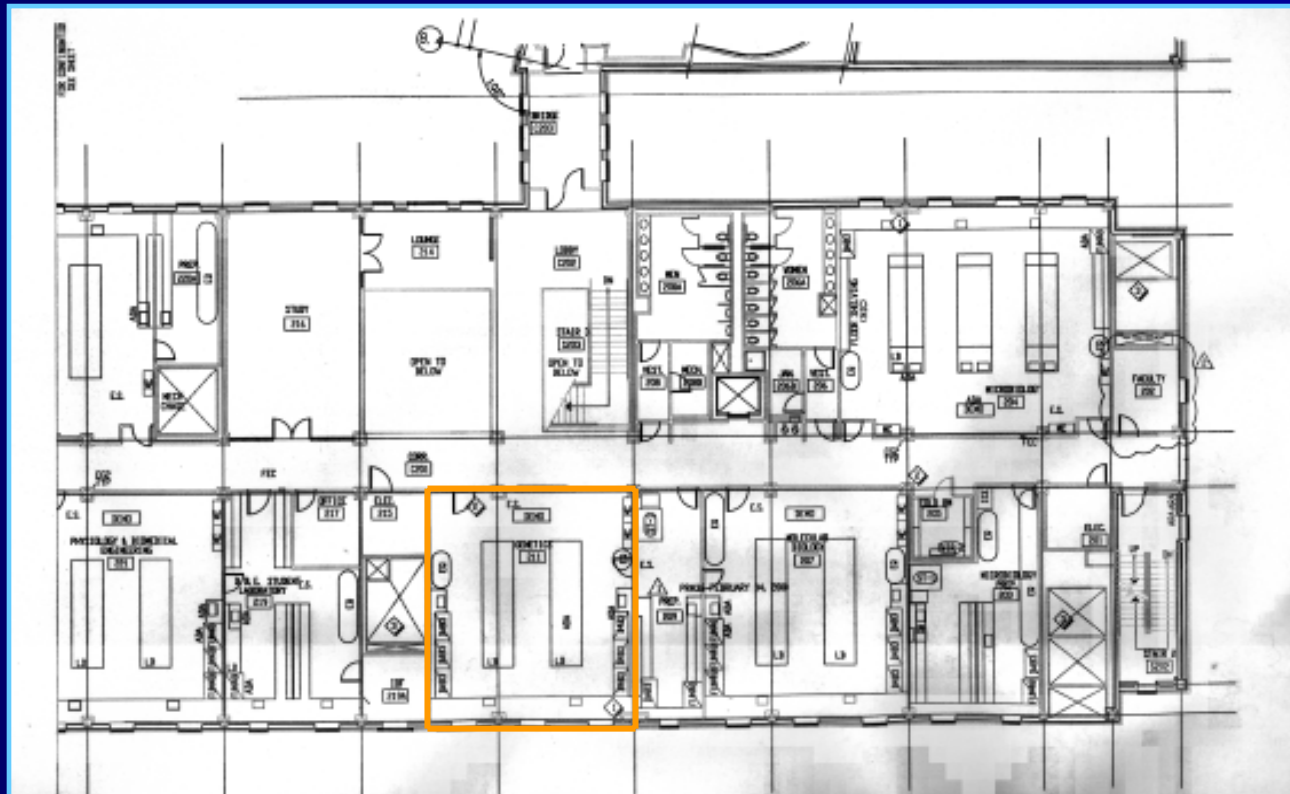
Lobby- Schematic Design Sketches



Lobby- Schematic Design Sketches



Genetics Laboratory



Genetics Laboratory- Design Considerations

- Focal Points:
 - Speaker
 - Marker board
- Research being performed

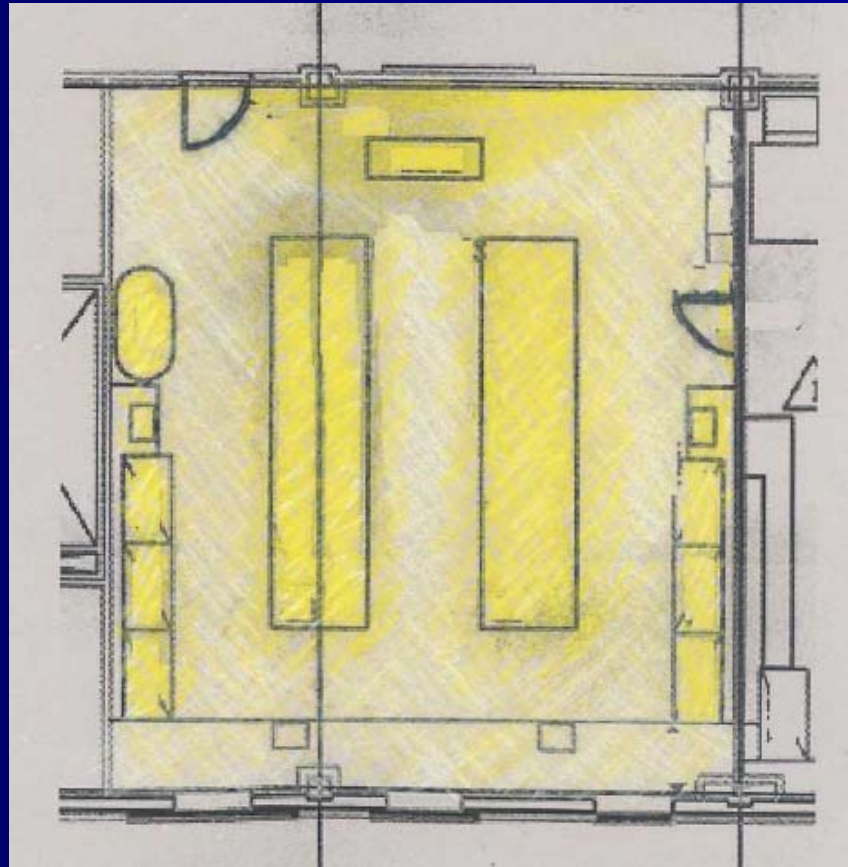
Genetics Laboratory- Schematic Design Goals

- Productive atmosphere
- Clean
- Limit Glare
- Good visibility

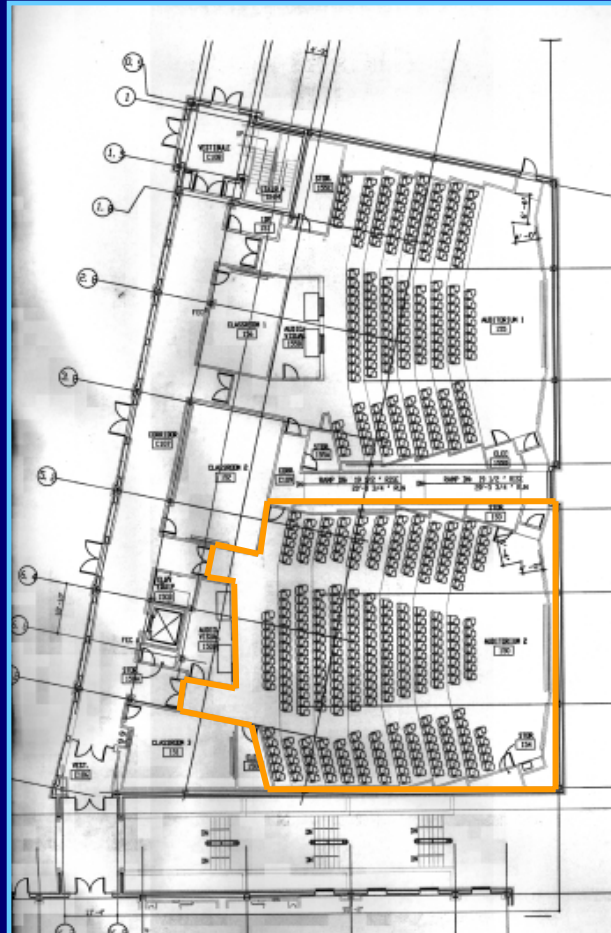
Genetics Laboratory- Schematic Design Examples



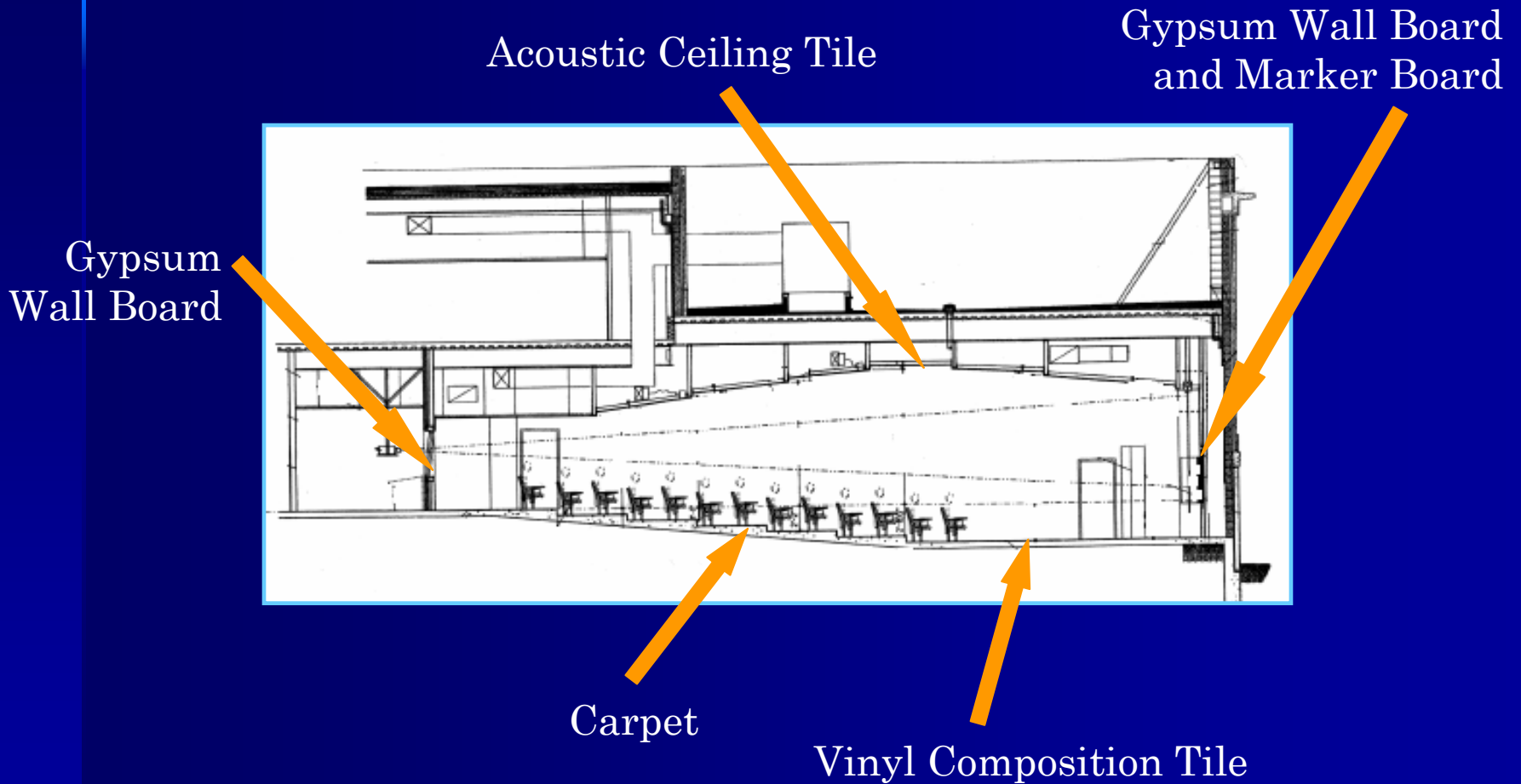
Genetics Laboratory- Schematic Design Sketches



Auditorium



Auditorium- Section



Auditorium- Design Considerations

- Focal Points:
 - Speaker
 - Marker boards & projection screen
- Task dependent flexibility in light levels

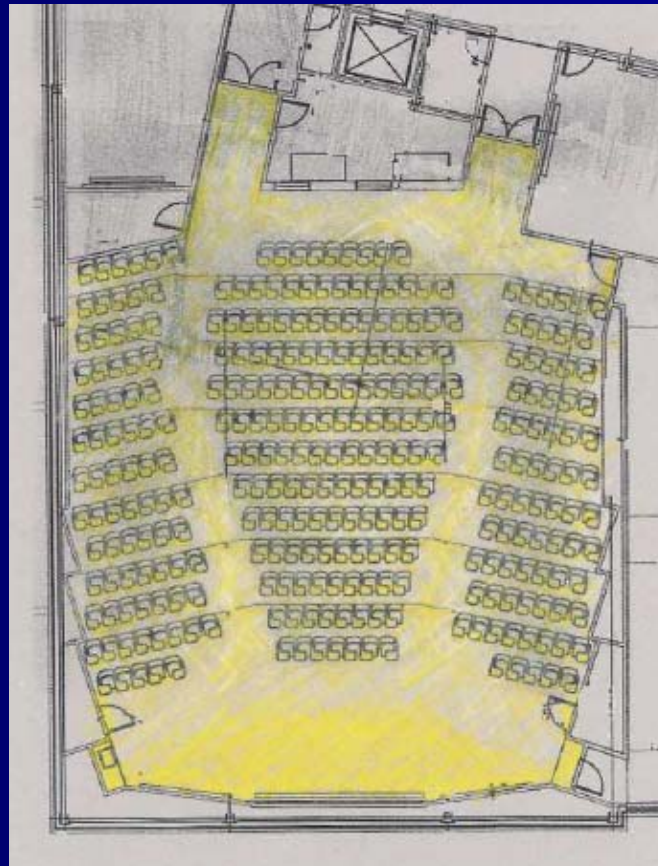
Auditorium- Schematic Design Goals

- Draw attention to front of room
- Flexible system
- Academic atmosphere

Auditorium- Schematic Design Examples



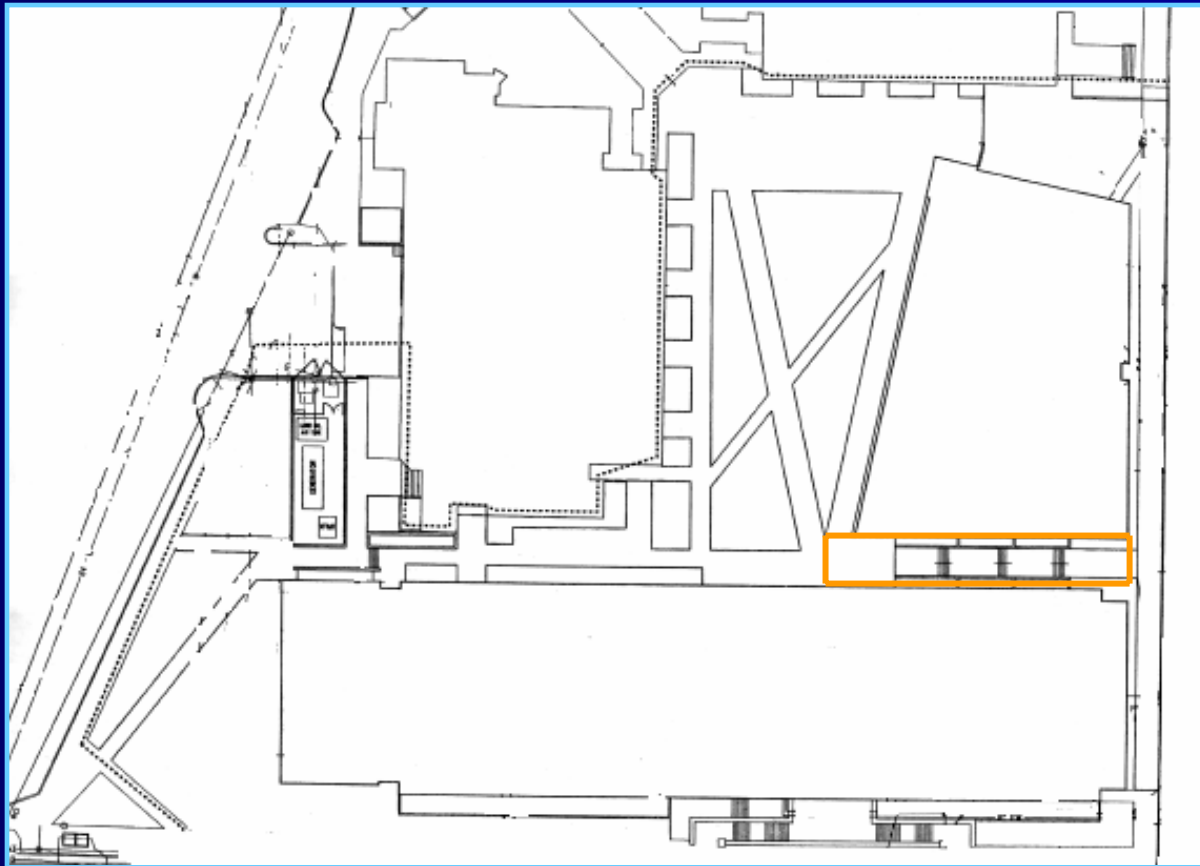
Auditorium- Schematic Design Sketches



Auditorium- Schematic Design Sketches



Exterior



Exterior- Description

- Materials:
 - Walls: Brick & Pre-cast Concrete
 - Ground: Grass & Concrete

Exterior- Design Considerations

- Focal Points:
 - Building Entrances
 - Walkways
- Overhead Walkways
- Narrow space between 2 story and 3 story buildings

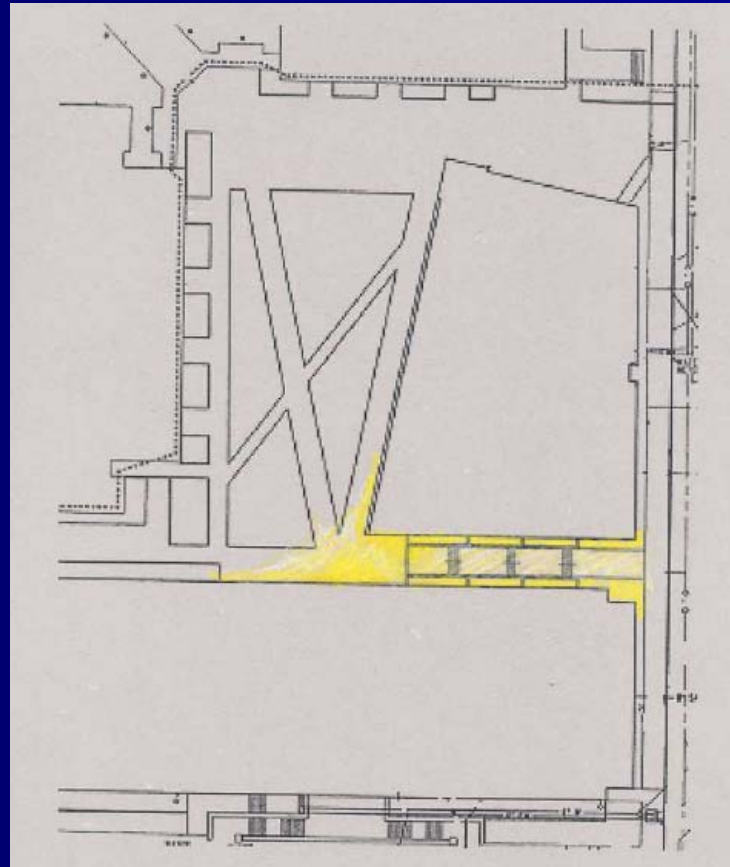
Exterior- Schematic Design Goals

- Safe & secure atmosphere
- Good visibility
- Facial Modeling

Exterior- Schematic Design Examples



Exterior- Schematic Design Sketches



Questions?